

Coronavirus Update

Coronavirus – Being Prepared

As you may be aware there is a lot of speculation in the news about the possibility of school closures in response to the threat of Coronavirus.

Coronavirus – Being Prepared

We really hope that it won't come to this, but we have made plans so that we are prepared.

Coronavirus – Being Prepared

We now need to share these plans with you. This is **NOT** saying that we will close, just that you need to know what will happen if we do.

If the school has to close, it is not an extended holiday...



...we will be asking you to work from home

This demands a mature response from you.

We know that you may be worried about your exams,
but there is **no need to worry**.

There is no reason to think that exams are under any threat at all. You've been working hard towards them. You may just have to do more of that preparation at home – **but we will still be there to support you**.

Plans for Working at Home

- Your teachers will set work for every lesson using **Show My Homework**.
- We intend to stick closely to your normal timetable.
- The lessons will be sent to you by 8:40am on the day of the lesson – it may have been sent the day before.

Plans for Working at Home

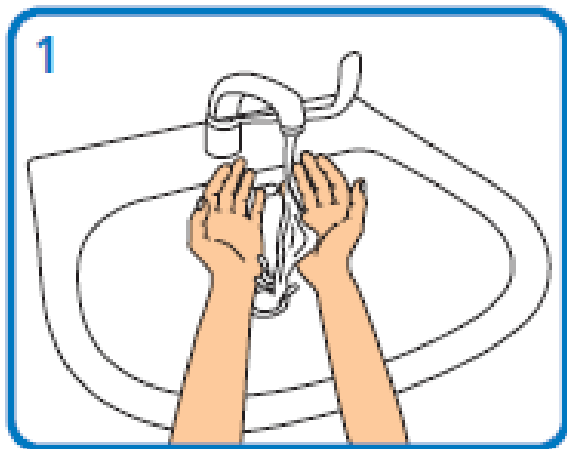
- Lessons will normally contain a starter and a main activity...make sure that you do everything.
- If you don't have the book for a subject then still do the work – your teachers will accept work done on paper or other books. Still take pride in presentation.

Supporting your Learning

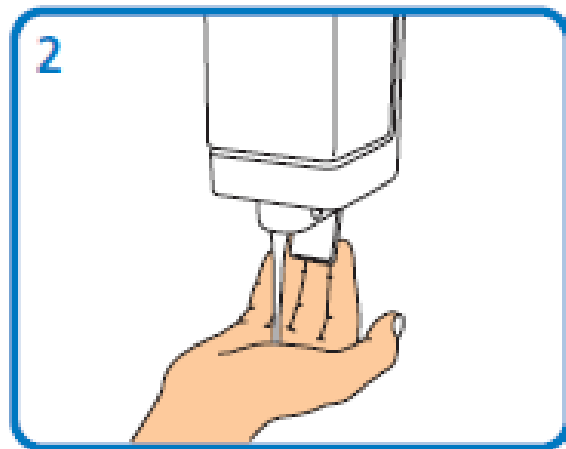
- Your teachers will be closely monitoring Show My Homework throughout the day.
- Post any questions about the work, and they should get back to you as soon as possible.
- Of course there are one or two subjects where it may not be appropriate to set homework, such as PE or a Food practical lesson.

Remember...

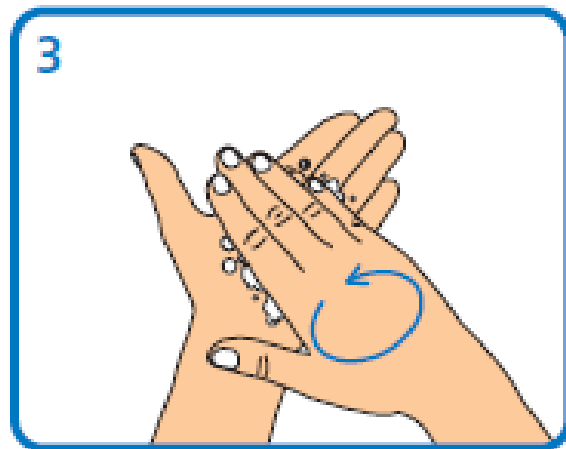
- These plans are for a worst case scenario, that the school does have to shut.
- In the meantime, we carry on working as normal.
- Make sure that you practice basic hygiene...ensuring regularly washing hands...and you don't have to just wash hands to 'Happy Birthday'



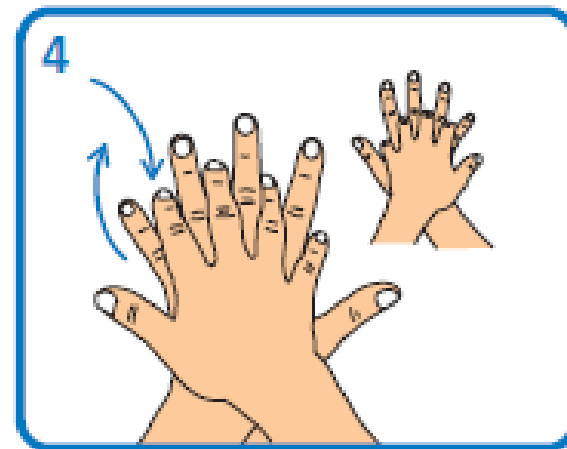
1
Is this the real life? Is this
just fantasy?



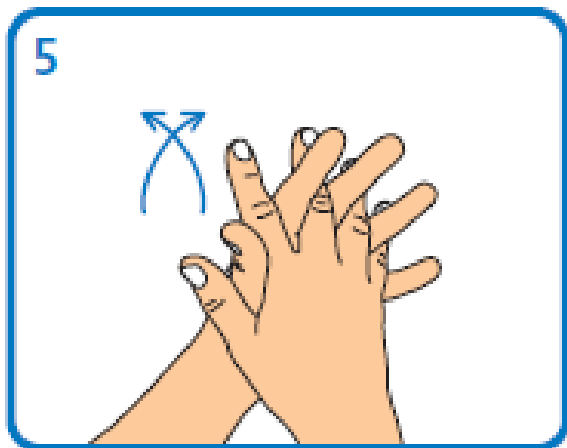
2
Caught in a landslide, no
escape from reality



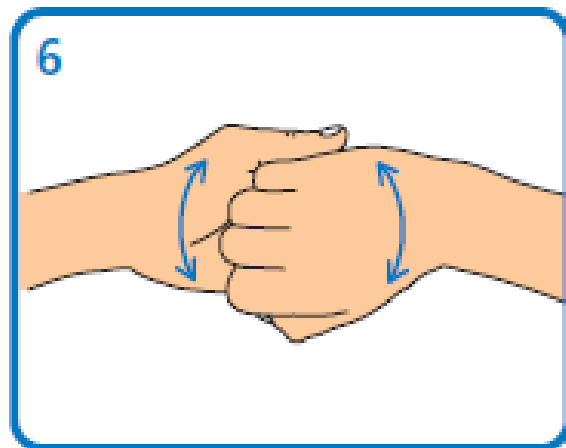
3
Open your eyes, look up
to the skies and see



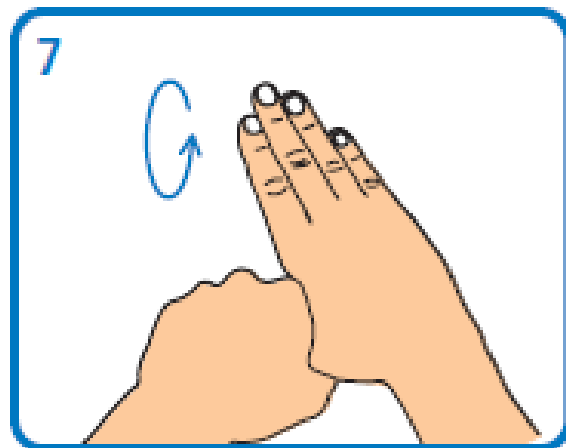
4
I'm just a poor boy, I need
no sympathy



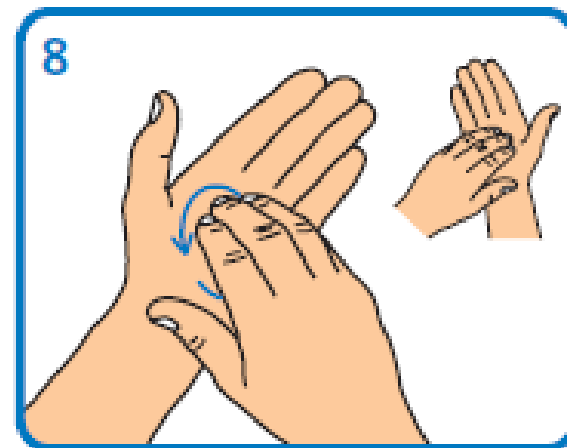
5
Because I'm easy come,
easy go, little high, little
low



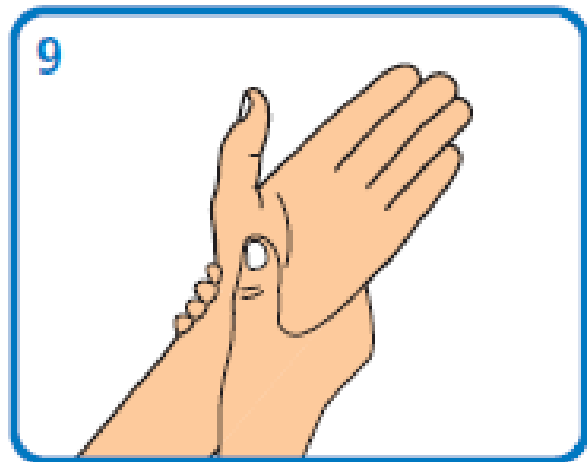
6
Anyway the wind blows
doesn't really matter to
me, to me



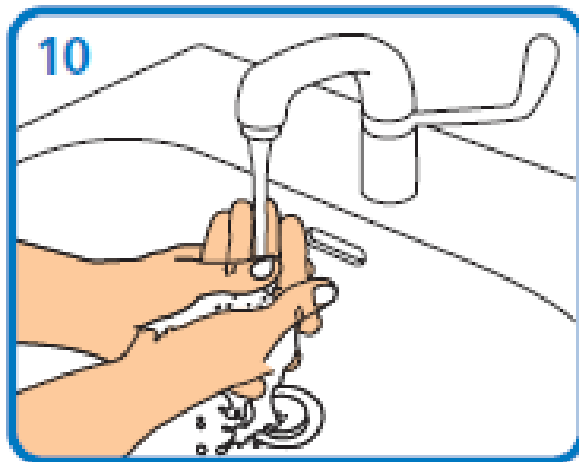
7
Mama, just killed a man



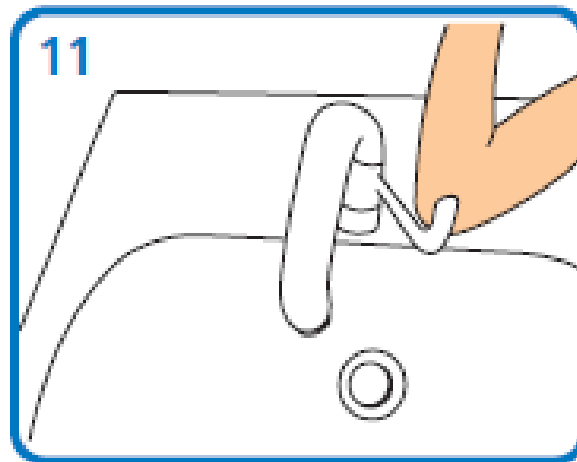
8
Put a gun against his
head, pulled my trigger,
now he's dead



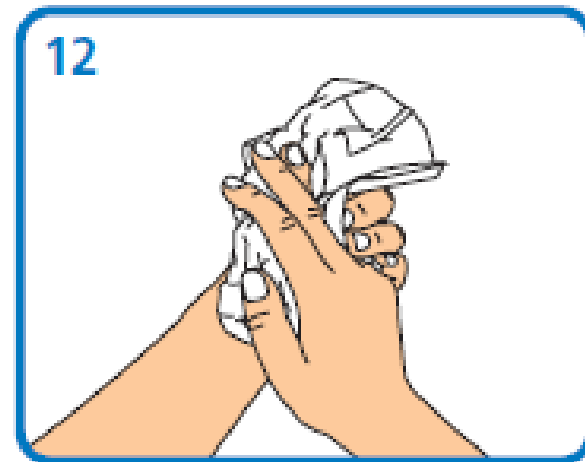
Mama, life had just begun



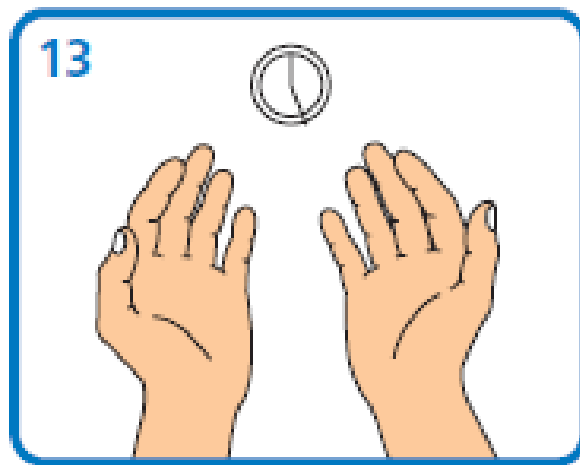
But now I've gone and
thrown it all away



Mama, ooh, didn't mean
to make you cry



If I'm not back again this
time tomorrow



Carry on, carry on as if
nothing really matters

Go to WashYourLyrics.com
to make your own poster,
picking a song of your
choice!

Remote Access

[Office 365](#)

[Show My Homework](#)

[ParentPay](#)

[Service Health](#)



Giles Academy

[View homework calendar](#)

Select a year ▾

Select a type ▾

English × ▾

Select a teacher ▾

All classes ▾

📅 16 Mar - 22 Mar



[Homework key ▾](#)

Monday 16th Mar	Tuesday 17th Mar	Wednesday 18th Mar	Thursday 19th Mar	Friday 20th Mar	Saturday 21st Mar	Sunday 22nd Mar
<p>10En8 English Mrs J. Tebbutt</p>	<p>7En6 English Miss P. Thomas-Karley ¹</p>	<p>7En6 English Miss P. Thomas-Karley</p>	<p>11En1 English Miss P. Thomas-Karley</p>	<p>11En3 English Miss A. Gray</p>		
<p>11En3 English Miss A. Gray ³</p>	<p>11En1 English Miss P. Thomas-Karley ¹</p>	<p>11En1 English Miss P. Thomas-Karley</p>		<p>11En6 English Mr A. Woods</p>		
<p>10Lit6 English Miss A. Gray ³</p>	<p>10En8 English Mrs J. Tebbutt</p>			<p>10Lit6 English Miss A. Gray</p>		
<p>10Lit7 English Miss C. Chapman</p>	<p>10Lit7 English Miss C. Chapman</p>			<p>11Lit4 English Miss C. Chapman</p>		
<p>7En3 English Mrs M. Warelis</p>	<p>11En7 English Mrs M. Warelis</p>			<p>7En3 English Mrs M. Warelis</p>		
<p>9En4 English Mr M. Cooper</p>				<p>9En5 English Mrs J. Tebbutt</p>		
<p>9En5 English Mrs J. Tebbutt</p>						
<p>7En3 English Mrs M. Warelis</p>						
<p>10En1</p>						

Login

[Forgot password?](#)

Staff

Parent

Student

I already have an account

I don't have an account yet

Giles Academy

Enter email address or username

.....



Log in

Or log in with:



Sign in with Office 365



Sign in with Google



Sign in with RM Unify

? Need help logging in?

▶ [Logging in as a student](#)

Forgot password?

Reset your password using your school email address.

Correct any typos or try a different email address you may have used. We are not able to share any login details for security reasons.

Issues with the PIN?

You only need a PIN to log in for the first time. If you have forgotten your details and cannot reset your password, contact the school to get a new PIN or ask your parent.



Knowledge Organisers

[Art and Design](#)

[Business Studies](#)

[Computing](#)

[Design and Technology](#)

[English Language](#)

[English Literature](#)

Queries & Concerns

You may have some questions or concerns:
StudentAbsence@gilesacademy.co.uk