

Careers Education



Aspire | Challenge | Achieve

JOB

OF THE WEEK

Our Job of the week this week is
Interior Designer



Job of the Week – Interior Designer

WHAT YOU DO

In this role you could:

- meet clients to discuss their requirements and ideas
- develop designs to suit clients' needs, their budget, and the type of building
- prepare initial sketches and mood boards for client approval
- advise on the use of space, colour schemes, fabrics, fittings and furniture
- work out costs and prepare estimates
- create detailed drawings from the initial sketches, usually on a computer
- find suppliers of fittings, furniture, fabrics, and wall and floor coverings

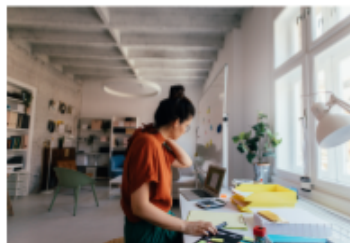
SKILLS REQUIRED

You will need:

- design skills and knowledge
- to be thorough and pay attention to detail
- customer service skills
- the ability to come up with new ways of doing things
- the ability to accept criticism and work well under pressure
- knowledge of building and construction
- the ability to use your initiative
- the ability to work well with others
- to be confident using a computer and main software packages

WHAT YOU WEAR

Your attire will be smart/ smart-casual dependant on whether you are studio/ home based or at a business meeting with a client



WORKING CONDITIONS

You could work in an office, from home, in a creative studio or at a client's business

Your conditions will usually be comfortable but busy

WORKING HOURS

40—42

Evenings/ weekends, attend events and appointments

ANNUAL LEAVE

Usually the standard 27 days plus bank holidays unless self-employed



ANNUAL INCOME

£18,000- £45,000



EDUCATION & EXPERIENCE

University

You could take a foundation degree, higher national diploma or degree in a relevant subject like Interior Design, Art and Design, Interior Architecture or Spatial Design.

Entry requirements

You will usually need 1 or 2 A levels, or equivalent, for a foundation degree or higher national diploma; 2 to 3 A levels, or equivalent, for a degree

Post 16 Education

You could get started with one of the following: Level 3 Diploma in Interior Design, Level 3 Diploma in Art and Design, A Level in Art and Design

Entry requirements

Usually, 4 or 5 GCSEs at grades 9 to 4 (A* to C), or equivalent, including English, maths and a creative subject

Apprenticeship

You could do a Furniture Design Technician Advanced Apprenticeship to get into Interior Design

Entry requirements

You'll usually need 4 or 5 GCSEs at grades 9 to 4 (A* to C) and, for a higher or degree apprenticeship you will need A levels, or equivalent



Labour Market Information

In the Careers section of the school website you can find the useful comparison tool the 'Labour Market Information widget'

Use the widget to compare different job roles in any employment sector or relating specifically to the 'Job of the Week'.

Product, clothing and related designers		Architects		Artists	
Weekly Pay £520	Annual Pay £27,040	Weekly Pay £730	Annual Pay £37,960	Weekly Pay £480	Annual Pay £24,960
Hours/Week 33h	Hourly Pay £16	Hours/Week 31h	Hourly Pay £24	Hours/Week 35h	Hourly Pay £14
Workforce Change (projected)		Workforce Change (projected)		Workforce Change (projected)	
Growth 0.9%	Replacement 57.9%	Growth 4.3%	Replacement 55.3%	Growth 0.9%	Replacement 57.9%
The workforce is projected to grow by 0.9% over the period to 2027, creating 800 jobs. In the same period, 57.9% of the workforce is projected to retire, creating 49,600 job openings.		The workforce is projected to grow by 4.3% over the period to 2027, creating 2,900 jobs. In the same period, 55.3% of the workforce is projected to retire, creating 37,700 job openings.		The workforce is projected to grow by 0.9% over the period to 2027, creating 600 jobs. In the same period, 57.9% of the workforce is projected to retire, creating 36,400 job openings.	
You might find this job in Architectural & related Services to buildings Retail trade Printing & recording Gambling		You might find this job in Architectural & related Services to buildings Membership organisations Specialised construction		You might find this job in Libraries, etc Arts & entertainment Computer programming, etc Membership organisations Office admin.	
More info	Clear card	More info	Clear card	More info	Clear card

Product, clothing and related designers

Product, clothing and related designers plan, direct and undertake the creation of designs for new industrial and commercial products, clothing and related fashion accessories, costumes and wigs, and for building interiors and stage sets.

Common tasks in this job:

- liaises with client to determine the purpose, cost, technical specification and potential uses/users of product;
- undertakes research to determine market trends, production requirements, availability of resources and formulates design concepts;
- prepares sketches, designs, patterns or prototypes for textiles, clothing, footwear, jewellery, fashion accessories, set props, wigs, ceramics, plastics, motor vehicles, domestic appliances and engineering products;
- prepares sketches, designs, mock-ups and storyboards for consideration by theatre/film director or client;

Back

Clear card

Architects

Architects plan and design the construction and development of buildings and land areas with regard to functional and aesthetic requirements.

Common tasks in this job:

- liaises with client and other professionals to establish building type, style, cost limitations and landscaping requirements;
- studies condition and characteristics of site, taking into account drainage, topsoil, trees, rock formations, etc.;
- analyses site survey and advises client on development and construction details and ensures that proposed design blends in with the surrounding area;
- prepares detailed scale drawings and specifications for design and construction and submits these for planning approval;

Back

Clear card

Artists

Artists create artistic works using appropriate techniques, materials and media; design artwork and illustrations; and restore damaged pieces of art.

Common tasks in this job:

- conceives and develops ideas and ways of working for artistic composition;
- selects appropriate materials, medium and method;
- prepares sketches, scale drawings or colour schemes;
- builds up composition into finished work by carving, sculpting, etching, painting, engraving, drawing, etc.;

Back

Clear card

Powered by LMI For All.

To compare the Labour Market Information of different job roles that you might be interested in please visit the Careers section on the school website.

JOB OF THE WEEK

Discover more about Interior Design opportunities with these videos:

The job of an Interior Designer



<https://www.youtube.com/watch?v=AgnNaU0oDXM>

Kitchen and Bathroom
Designers



<https://www.youtube.com/watch?v=ljFDSEdYQVU>

Interior Design at Derby University



<https://www.youtube.com/watch?v=Mbv9RQFS5Jk>

Architect or Interior Designer



<https://www.youtube.com/watch?v=oaxQ2bCVCJM>

Top 10 Interior Designers



<https://www.youtube.com/watch?v=S92Ce4K5oHs>

Purpose of an Interior
Designer



<https://www.youtube.com/watch?v=O0sd20ABH4s>

JOB

OF THE WEEK

Click on the website links to research the job role further:

[Interior designer | Explore careers | National Careers Service](#)

[Education & CPD | British Institute of Interior Design \(biid.org.uk\)](#)

[Interior Design BA \(Hons\) degree course - BA \(Hons\) – ARU](#)

[Interior Design at University of the Arts London – UCAS](#)

[Interior design courses | Prospects.ac.uk](#)